

**CITY OF VINCENT
TOWN PLANNING SCHEME NO. 1
MOUNT HAWTHORN PRECINCT - SCHEME MAP 1**

LEGEND

METROPOLITAN REGION SCHEME RESERVES

Note: The Western Australian Planning Commission care of the Department for Planning and Infrastructure should be consulted for full information on the actual land requirements for all Metropolitan Region Scheme Reserves.

- PARKS AND RECREATION
- R Restricted Public Access
- PRIMARY REGIONAL ROADS RESERVATION
- OTHER REGIONAL ROADS RESERVATION
- RAILWAYS
- PUBLIC PURPOSE
Particular use denoted as follows:
- H Hospital
- HS High School
- TS Technical School
- CP Car Park
- U University
- CG Commonwealth Government
- SU Special Use
- WSD Water Authority of Western Australia
- P Prison

TOWN OF VINCENT SCHEME RESERVES

- PARKS AND RECREATION
- R Restricted
- PUBLIC PURPOSE
Particular use denoted as follows:
- PS Primary School
- CP Car Park
- CU Civic Uses
- I Institute for the Deaf
- W Water Supply Sewerage and Drainage
- TS Technical School

TOWN OF VINCENT SCHEME ZONES

- RESIDENTIAL
- RESIDENTIAL-COMMERCIAL
- COMMERCIAL
- LOCAL CENTRE
- DISTRICT CENTRE
- SPECIAL USE
Particular use denoted as follows:
- CP Car Park
- HC Hall and Non Residential Club
- H Hotel
- S Service Station
- FC Function Centre

ADDITIONAL INFORMATION

- RESIDENTIAL PLANNING CODES
- CODE AREA BOUNDARY
- SCHEME AREA BOUNDARY
- DENSITY CODE



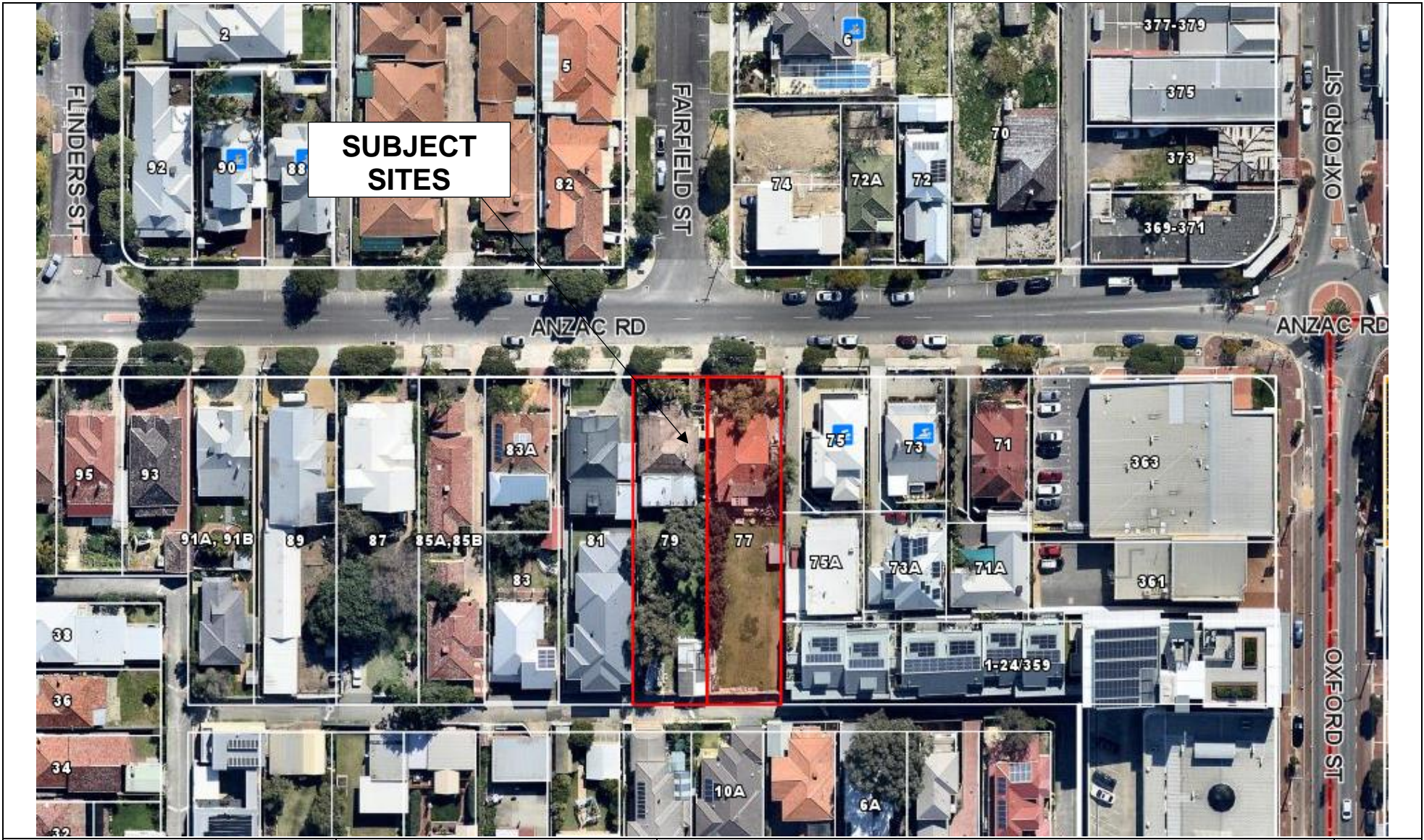
CITY OF VINCENT

The City of Vincent does not warrant the accuracy of information in this publication and any person using or relying upon such information does so on the basis that the City of Vincent shall bear no responsibility or liability whatsoever for any errors, faults, defects or omissions in the information. Includes layers based on information provided by and with the permission of the Western Australian Land Information Authority (Landgate) (2013).

Consultation and Location Map
Nos. 77 – 79 Anzac Road, Mount Hawthorn

Extent of Consultation





**SUBJECT
SITES**



CITY OF VINCENT

The City of Vincent does not warrant the accuracy of information in this publication and any person using or relying upon such information does so on the basis that the City of Vincent shall bear no responsibility or liability whatsoever for any errors, faults, defects or omissions in the information. Includes layers based on information provided by and with the permission of the Western Australian Land Information Authority (Landgate) (2013).

**Nos. 77 – 79 Anzac Road, Mount
Hawthorn**

