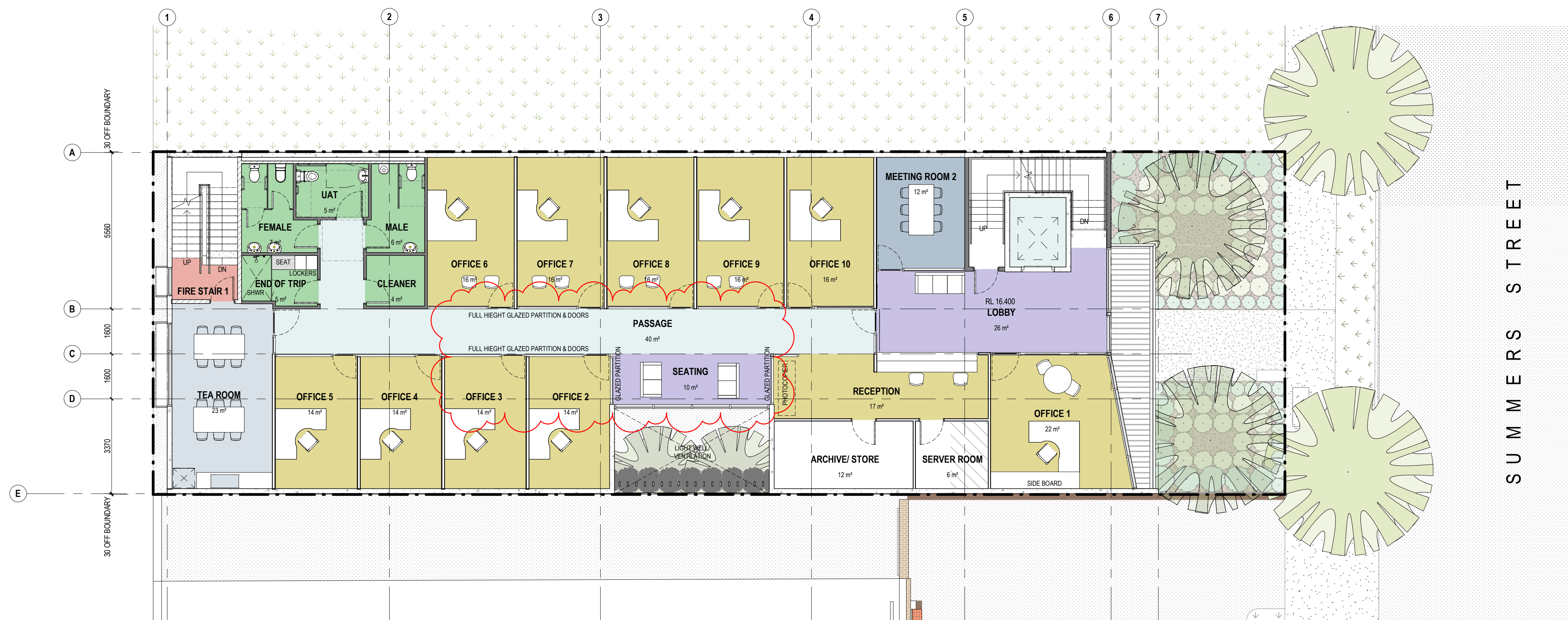


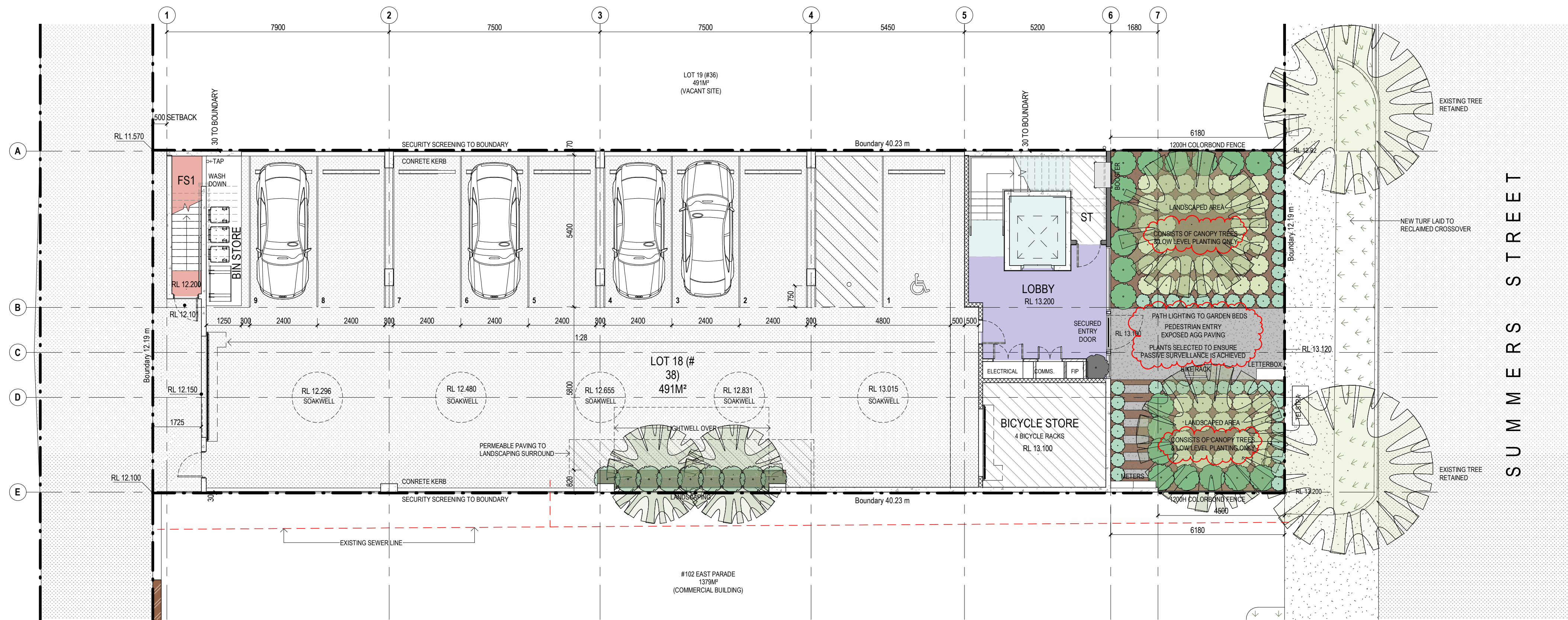
2 Site Survey
1 : 200

<div><div><div>WHITEHAUS</div><div>architecture interior design drafting</div></div><div><div>2 Church Street PERTH 6000</div><div>(08) 9226 3236</div><div>admin@whitehaus.com.au</div></div><div><div>ABN: 66 159 398 428</div></div></div>			<div>CLIENT:</div> <div><div>WAPOU</div><div>WA Prison Officers' Union</div></div>			<div><div><div>J</div><div>Issued For Development Approval</div><div>11/11/12</div></div><div><div>H</div><div>Issued For Comment</div><div>09/11/12</div></div><div><div>G</div><div>Issued for Information</div><div>02/12/20</div></div><div><div>F</div><div>Issued for Information</div><div>01/12/20</div></div><div><div>E</div><div>Issued for Information</div><div>23/11/20</div></div><div><div>D</div><div>Client Presentation</div><div>17/11/20</div></div><div><div>C</div><div>Issued for DRP</div><div>28/10/20</div></div><div><div>B</div><div>Issued for Planners Comment</div><div>29/10/20</div></div><div><div>A</div><div>For Discussion</div><div>07/09/20</div></div></div> <div><div>REV</div><div>DESCRIPTION</div><div>DATE</div></div>			<div><div>PROJECT:</div><div>WAPOU Offices</div><div>Lot 18 (#38) Summers St</div><div>East Perth WA 6004</div></div> <div><div>PROJECT No. 20062</div><div>DATE: 09 2020</div><div>DRAWN: JT</div><div>APPROVED: WH</div></div>			<div><div>DRAWING TITLE:</div><div>Locality Plan & Site Survey</div></div> <div><div>SCALE @ A1:</div><div>As indicated</div></div> <div><div>DRAWING No.</div><div>DA01</div></div> <div><div>REV</div><div>J</div></div>			<div><div>DEVELOPMENT APPROVAL</div><div><div>WHITEHAUS®</div><div><div>THE COPYRIGHT OF THIS DRAWING, ALONG WITH ANY OTHER DOCUMENTS PREPARED BY WHITEHAUS PTY LTD, REMAINS THE PROPERTY OF WHITEHAUS PTY LTD. WHITEHAUS PTY LTD. GRANTS A LICENSE FOR THE USE OF THIS DOCUMENT FOR THE PURPOSE FOR WHICH IT WAS INTENDED ONLY. THE LICENSE IS NOT TRANSFERABLE WITHOUT THE WRITTEN PERMISSION FROM WHITEHAUS PTY LTD.</div></div></div></div>		
---	--	--	--	--	--	--	--	--	--	--	--	--	--	--	---	--	--

CITY OF VINCENT
RECEIVED
2 Mar 2021



2 First Floor
1:100



1 Proposed Site Plan/ Ground Floor
1:100

NLA CALCULATIONS

GROUND FLOOR	0.00 M ²
FIRST FLOOR	240.35 M ²
SECOND FLOOR	189.00 M ²
TOTAL	429.35 M ²

WHITEHAUS ©

THE COPYRIGHT OF THIS DRAWING ALONG WITH ANY OTHER DOCUMENTS PREPARED BY WHITEHAUS PTY LTD REMAINS THE PROPERTY OF WHITEHAUS PTY LTD. WHITEHAUS PTY LTD GRANTS LICENSE FOR THE USE OF THIS DOCUMENT FOR THE PURPOSES FOR WHICH THEY ARE INTENDED ONLY. THE LICENSE IS NOT TRANSFERABLE WITHOUT THE WRITTEN PERMISSION FROM WHITEHAUS PTY LTD.

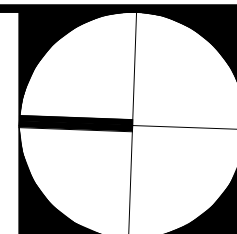
K	Development Approval - Drawings updated	25/02/21
J	Issued For Development Approval	11/12/12
H	Issued For Comment	09/11/12
G	Issued for Information	02/12/20
F	Issued for Information	01/12/20
E	Issued for Information	23/11/20
D	Client Presentation	17/11/20
Rev	Description	Date

WHITEHAUS

architecture | interior design | drafting

905 Hay Street PERTH 6000 | (08) 9236 3236

admin@whitehaus.com.au | ABN: 66 159 398 428



Client

WAPOU
WA Prison Officers' Union

Project

W.A. PRISON OFFICERS UNION OFFICES
Lot 18 (#38) Summers Street - East Perth WA 6004

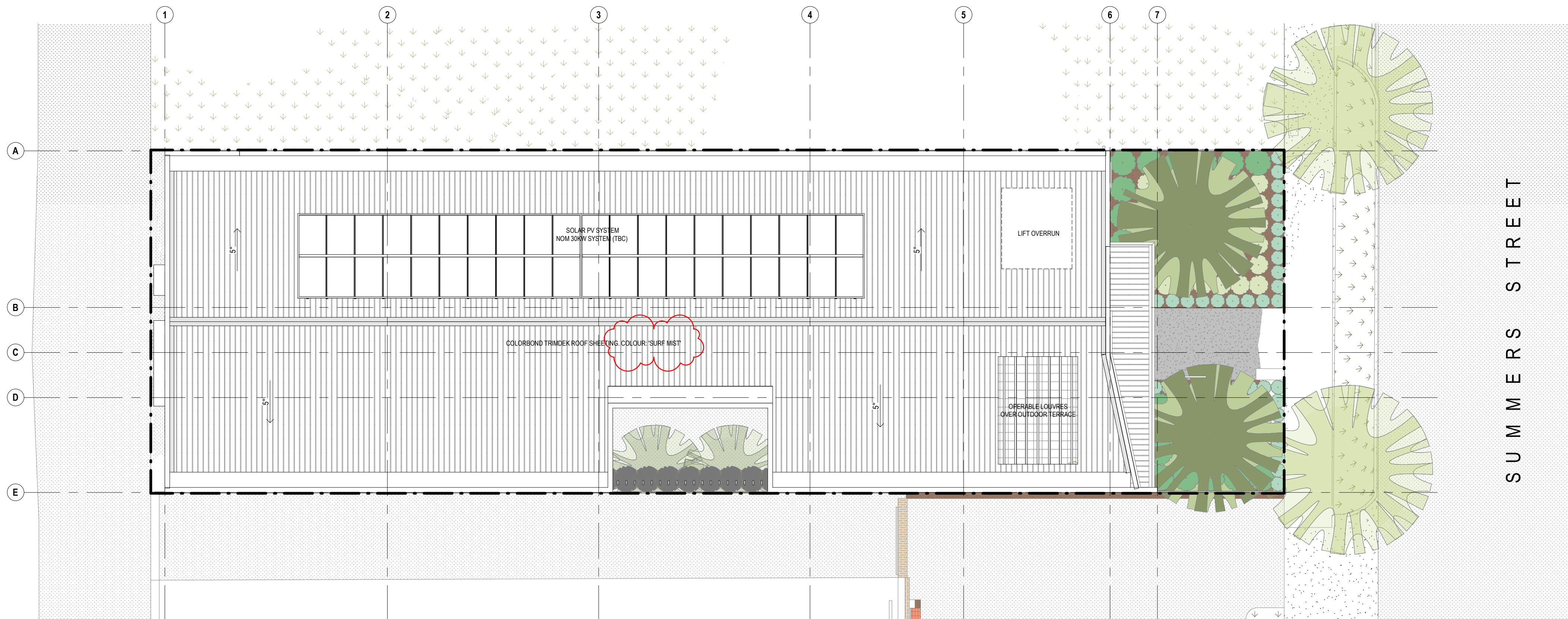
Drawing title

Proposed Site Plan/ Ground Floor & First Floor

Project No.	20062	Drawn	JT	Approved	WH	Scale @ A3	1:100
Status	DEVELOPMENT APPROVAL						
Drawing No.	DA03						Rev
						K	

0 2 4 6 8 10m

CITY OF VINCENT
RECEIVED
2 Mar 2021



2 Roof Plan
1:100



1 Second Floor
1:100

SUMMERS STREET

NLA CALCULATIONS

GROUND FLOOR	0.00 M²
FIRST FLOOR -	240.35 M²
SECOND FLOOR	189.00 M²
TOTAL	429.35 M²

WHITEHAUS ©

THE COPYRIGHT OF THIS DRAWING ALONG WITH ANY OTHER DOCUMENTS PREPARED BY WHITEHAUS PTY LTD REMAINS THE PROPERTY OF WHITEHAUS PTY LTD. WHITEHAUS PTY LTD GRANTS LICENSE FOR THE USE OF THIS DOCUMENT FOR THE PURPOSES FOR WHICH THEY ARE INTENDED ONLY. THE LICENSE IS NOT TRANSFERABLE WITHOUT THE WRITTEN PERMISSION FROM WHITEHAUS PTY LTD.

K	Development Approval - Drawings updated	25/02/21
J	Issued For Development Approval	11/12/12
H	Issued For Comment	09/11/12
G	Issued for Information	02/12/20
F	Issued for Information	01/12/20
E	Issued for Information	23/11/20
D	Client Presentation	17/11/20
Rev	Description	Date

WHITEHAUS

architecture | interior design | drafting

995 Hay Street PERTH 6000 | 08 9226 2236

admin@whitehaus.com.au | ABN: 66 159 398 428

Client

WAPOU
WA Prison Officers' Union

Project

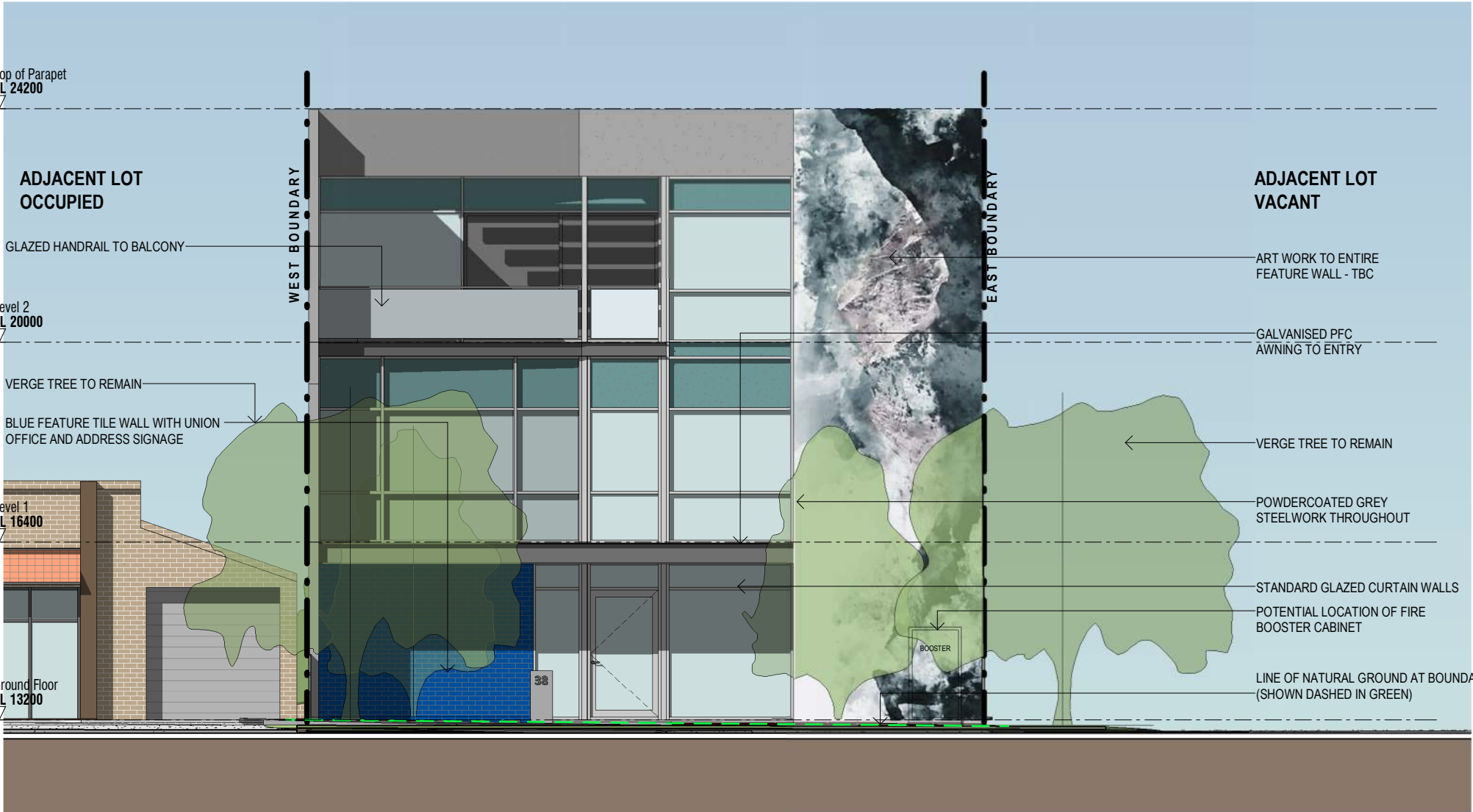
W.A. PRISON OFFICERS UNION OFFICES
Lot 18 (#38) Summers Street - East Perth WA 6004

Drawing title

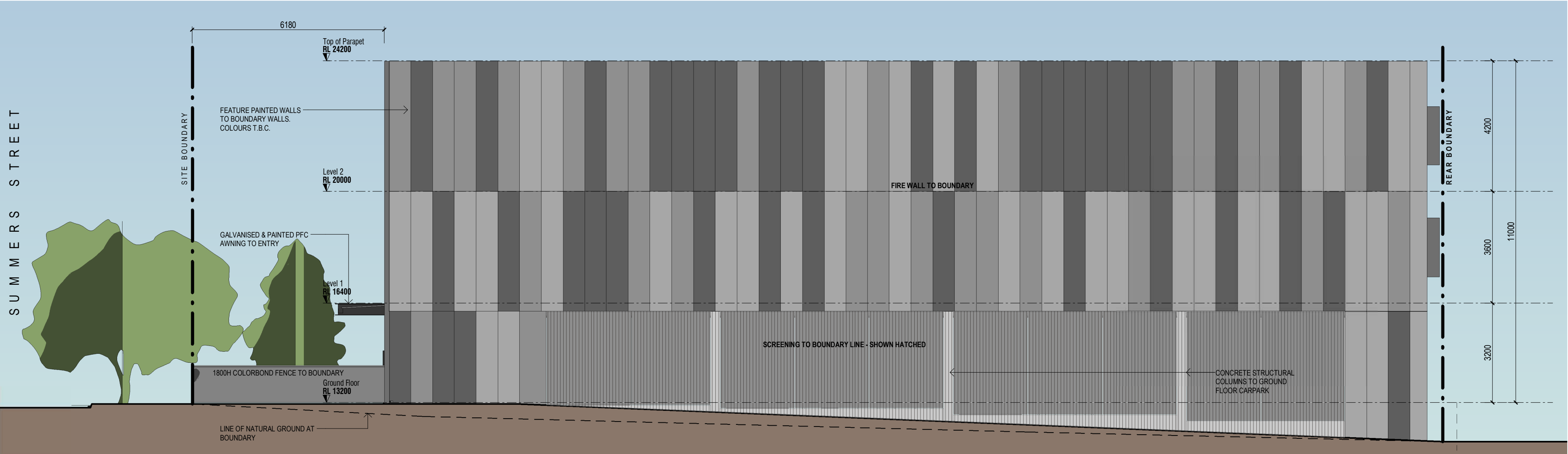
Second Floor & Roof Plan

Project No.	20062	Drawn	JT	Approved	WH	Scale @ A3	1:100
Status	DEVELOPMENT APPROVAL						
Drawing No	DA04						Rev
						K	

0 2 4 6 8 10m



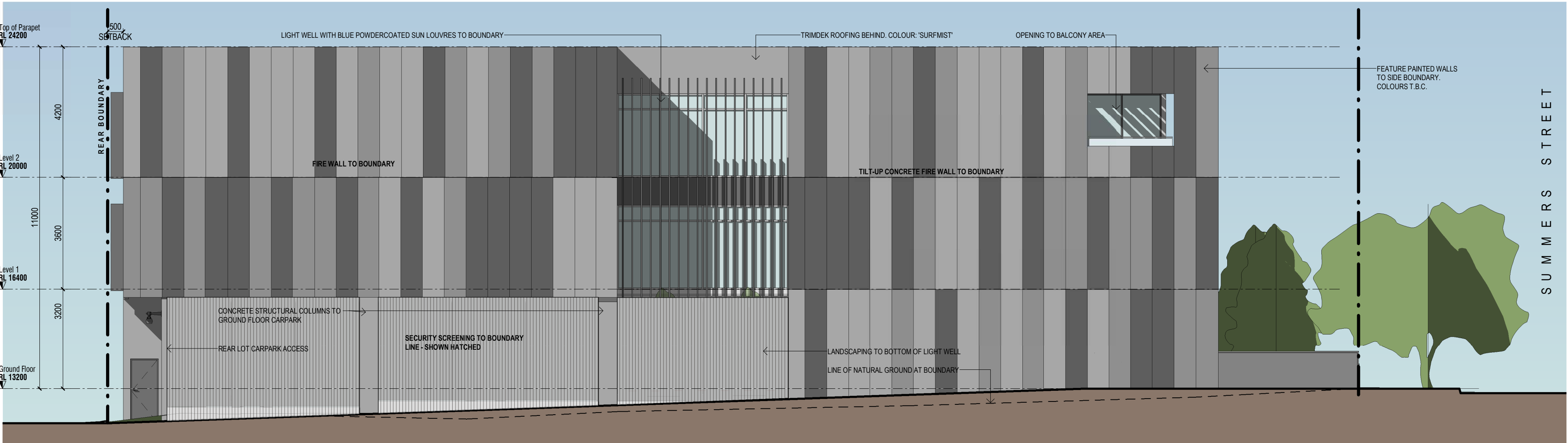
1 South Elevation - Summer Street



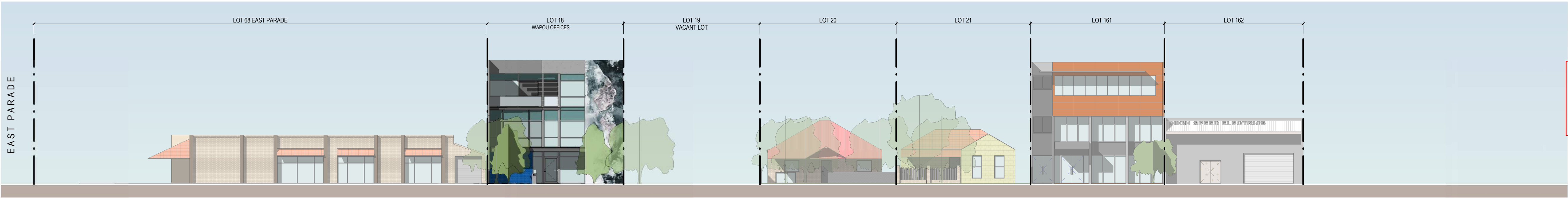
2 Eastern Elevation



3 North Elevation - Rear Laneway



4 Western Elevation



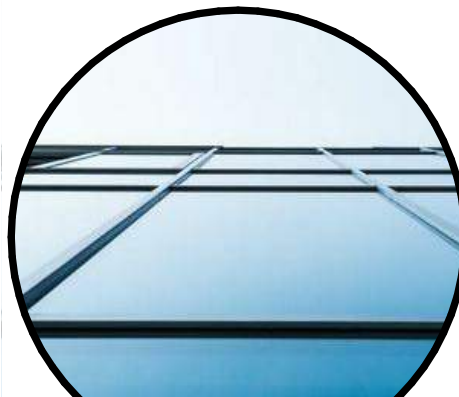
5 Summers Street Streetscape



PRECAST CONCRETE WALLS



1% FOR ART FEATURE WALL



POWERCOATED WINDOW FRAMES



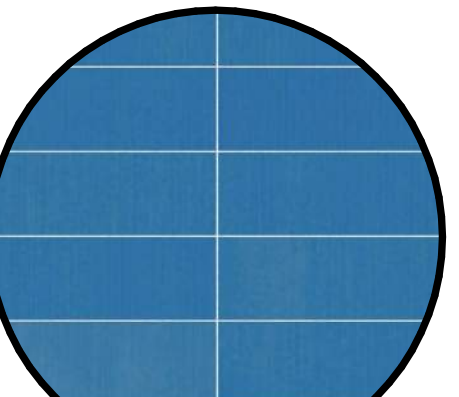
GLAZED BALUSTRADES TO TERRACE



PERMEABLE ROLLER DOORS TO CARPARK



MESH SCREENS FOR CARPARK SECURITY WITH PLANTING WHERE NOMINATED



BLUE FEATURE TILES TO ENTRY WALL. COLOUR TO MATCH WAPOU LOGO



PERMEABLE PAVING AROUND CARPARK LANDSCAPING



EXPOSED AGGREGATE PAVING TO PEDESTRIAN PATHWAY

Materiality
1:5

CITY OF VINCENT
RECEIVED
2 Mar 2021



HF - HYMENOSPORUM FLAVUM x2



GT - GLEITSIA TRICANTHOS x2



HEDERA IVY



TJ - TRACHELOSPORUM JASMINOIDES

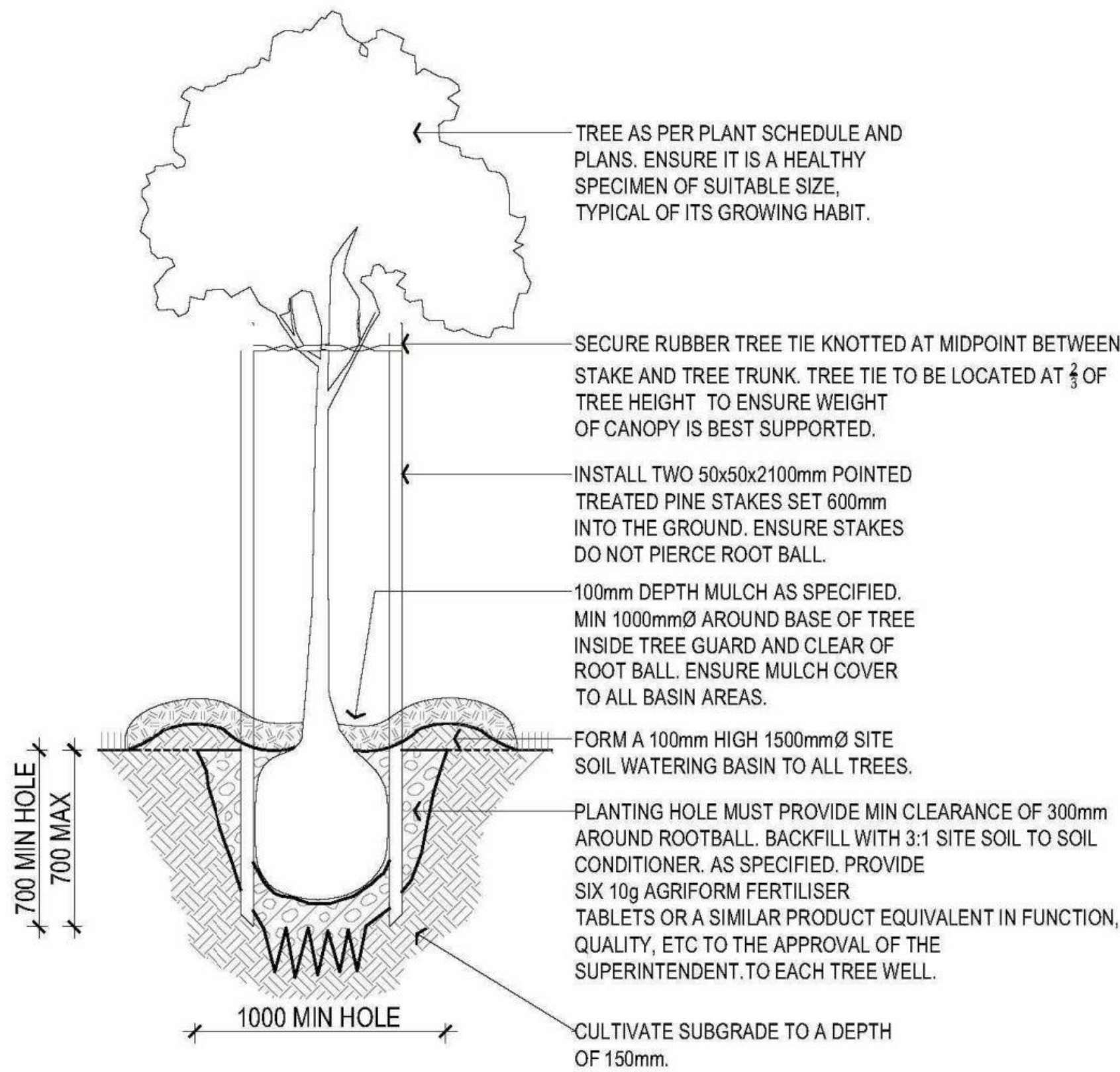


MM - MURRAYA MIN-A-MIN



LK - LOMANDRA KATRINUS

Planting Guide
1:50



3 TYPICAL 30-90 LITRE TREE PLANTING

NOTES

1. SOILS

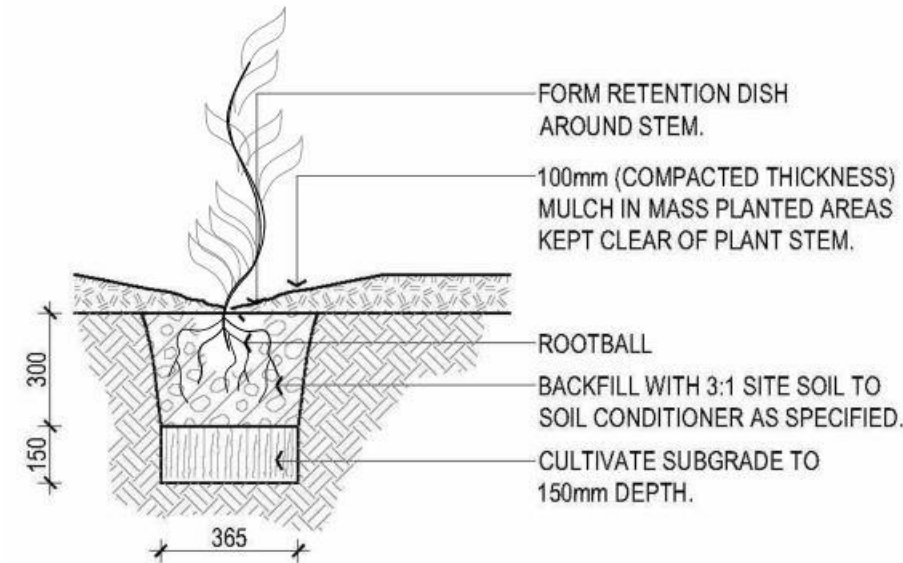
- EXISTING SOIL IN ALL NEW PLANTED AREAS SHALL BE TREATED WITH
- AQUAMORE SOIL IMPROVER TO A DEPTH OF 75 MM
- ECOWET WETTING AGENT AND ECO PURPLE FERTILIZER SHALL BE APPLIED TO ALL NEW PLANTED AREAS.
- PLANTED AREAS SHALL BE MULCHED WITH A AQUAMORE ORGANIC MULCH TO A DEPTH OF 75MM.

2. PLANTING

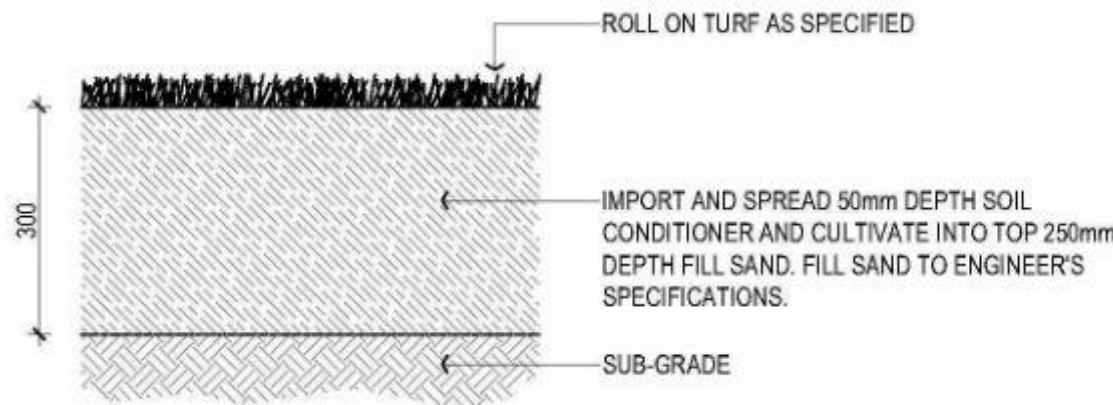
- TREES TO BE STAKED WITH AS PER THE DETAILS.
- ALL PLANTS TO BE HEALTHY, FREE FROM ANY DISEASES AND DEFORMITIES.

3. IRRIGATION

- ALL NEW PLANTINGS TO BE IRRIGATED BY A FULLY AUTOMATIC
- IRRIGATION SYSTEM. DRIP LINE TO GARDEN AREAS. 2 FLOOD BUBBLERS TO EACH TREE
- BUILDER TO ALLOW FOR ALL PENETRATION FOR IRRIGATION WORK



4 140-200mm POT PLANTING



5 DA - Roll-On Turf Area



1 Landscaping Plan
1:100

DEEP SOIL CALCULATIONS

SITE AREA - 491 M²

Deep Soil Area 1	- 34.74 M ²
Deep Soil Area 2	- 24.45 M ²
TOTAL	- 59.19 M ²

Clause A5.3.1 of Built Form Policy 7.1.1 requires deep soil to be minimum 12% of site = 58.92 m².

Current proposal is 0.27 m² over required deep soil area.

Planting Area 3	- 6.57 m ²
TOTAL LANDSCAPING AREA	- 65.76 m ²

Total landscaped area = 65.76 / 491 = 13.39% of site area.

L	Development Approval - Front setback planting updated	03/03/21
K	Development Approval - Drawings updated	25/02/21
J	Issued For Development Approval	11/12/12
H	Issued For Comment	09/11/12
G	Issued for Information	02/12/20
F	Issued for Information	01/12/20
E	Issued for Information	23/11/20
Rev	Description	Date

