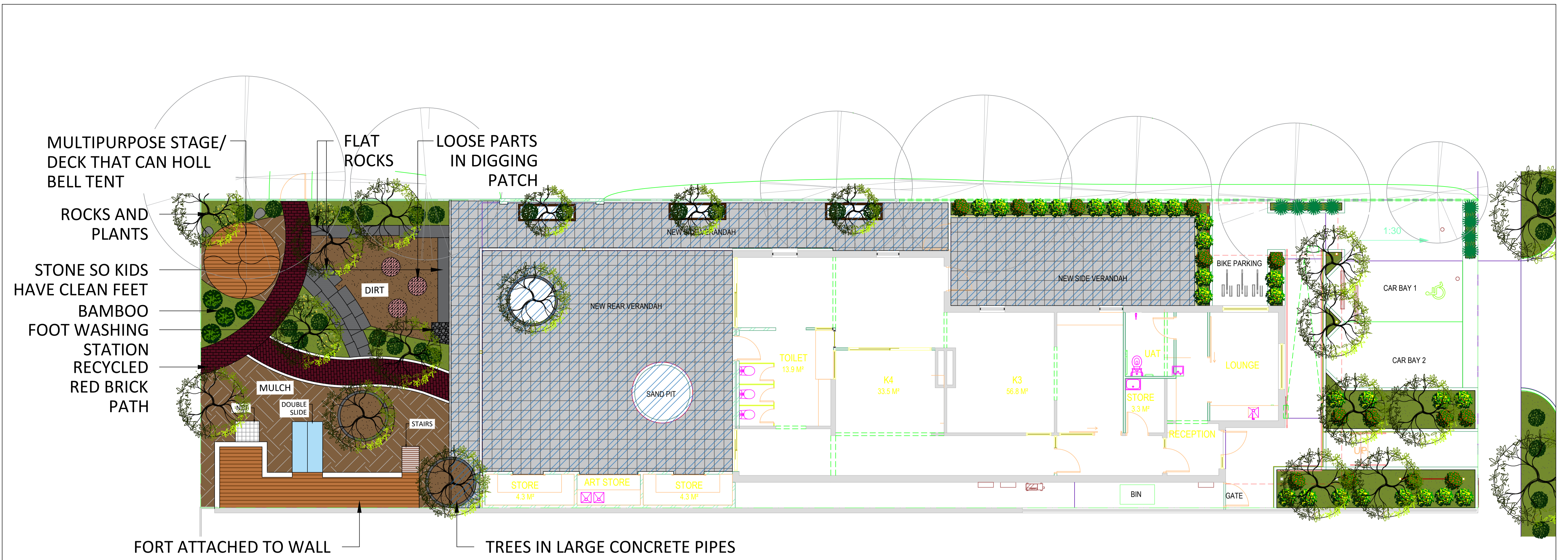


A large, mature olive tree with a thick, gnarled trunk and dense green foliage, standing in a grassy area next to a stone wall. The tree's canopy is broad and rounded, casting a shadow over the grass. The stone wall behind it is constructed from large, irregular blocks of light-colored stone. In the background, some buildings and more trees are visible under a clear sky.

A large, dense bush of purple flowers, likely Salvia, in a garden setting. The flowers are numerous and small, creating a thick mass of purple. The leaves are green and serrated. The bush is in the foreground, with a paved area and some buildings visible in the background.

DIANELLA
TASMANICA 'WYEENA'

Tree canopy					
Num.	Tree species	Number of trees	Canopy spread at mature (Diametar)	Area calculation (3.14 x radius squared) for single tree	Total surface under the tree canopy
1	Pyrus calleryana	6	4 m	$3.14 \times 4 = 12,56 \text{ m}^2$	75,40 m ²
2	Corymbia ficifolia	2	5 m	$3.14 \times 5 = 15,70 \text{ m}^2$	31,40 m ²
				Total area under canopy	Σ = 106,80 m²



MULTIPURPOSE STAGE/ DECK
THAT CAN HOLL BELL TENT



FLAT ROCKS



LOOSE PARTS IN
DIGGING PATCH



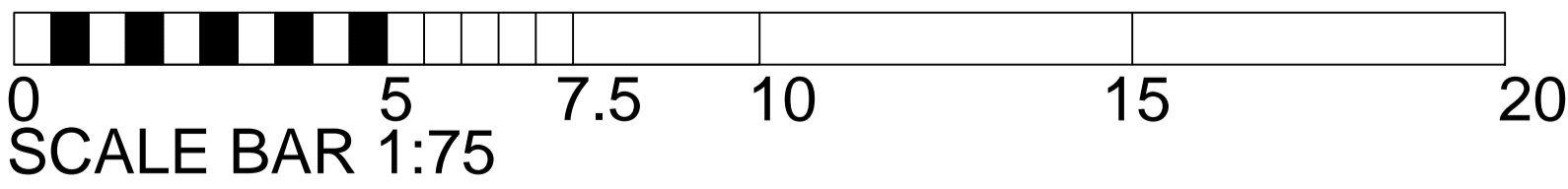
DOUBLE SLIDE AND
ROCKS WITH PLANTS




FORT



FOOT WASHING
STATION



	P.O. Box 774 e-mail: admin@childscapes.com.au web: childscapes.com.au	PROJECT	DRAWING				ISSUE			REVISIONS			
		AKIDAMY	OVERALL CONCEPT PLAN				FOR DEVELOPMENT APPROVAL			No	DATE	DRAWN	DETAILS
		CLIENT -	DRAWING NO L-01	SCALE 1:75	SHEET A1	REVISION 10	DRAWN NK	DATE 20/01/23		5	20/09/22	NK	CONCEPT- ISSUED FOR FEEDBACK
										6	22/09/22	NK	CONCEPT- ISSUED FOR FEEDBACK
										7	19/12/22	NK	CONCEPT- ISSUED FOR FEEDBACK
										8	20/12/22	NK	CONCEPT- ISSUED FOR FEEDBACK
										9	12/01/23	NK	CONCEPT- FOR DEVELOPMENT APPROVAL
										10	20/01/23	NK	CONCEPT- FOR DEVELOPMENT APPROVAL