

**CITY OF VINCENT
LOCAL PLANNING SCHEME NO. 2
SCHEME MAP 1 - LEEDERVILLE**

LEGEND

METROPOLITAN REGION SCHEME RESERVES

Note: The Western Australian Planning Commission acts on behalf of the Department of Planning and should be consulted for full information on the actual land requirements for all Metropolitan Region Scheme Reserves.

- PARKS AND RECREATION**
- R Restricted Public Access
- PRIMARY REGIONAL ROADS RESERVATION**
- OTHER REGIONAL ROADS RESERVATION**
- RAILWAYS**
- PUBLIC PURPOSES**
Particular use denoted as follows:
- H Hospital
- HS High School
- TS Technical School
- CP Car Park
- U University
- CG Commonwealth Government
- SU Special Use
- WSD Water Authority of Western Australia
- P Prison

CITY OF VINCENT LOCAL SCHEME RESERVES

- PUBLIC OPEN SPACE**
- R Restricted
- PUBLIC PURPOSES**
Particular use denoted as follows:
- PS Primary School
- CP Car Park
- CU Civic Uses
- HS High School
- I Institute for the Deaf
- W Water Supply Sewerage and Drainage
- TS Technical School

CITY OF VINCENT SCHEME ZONES

- RESIDENTIAL**
- MIXED USE**
- COMMERCIAL**
- LOCAL CENTRE**
- DISTRICT CENTRE**
- REGIONAL CENTRE**
- SPECIAL USE**
Particular use denoted as follows:
- CP Car Park
- CU Community Use
- FC Function Centre
- HC Hall and Non Residential Club
- H Hotel
- PW Place of Worship
- S Service Station

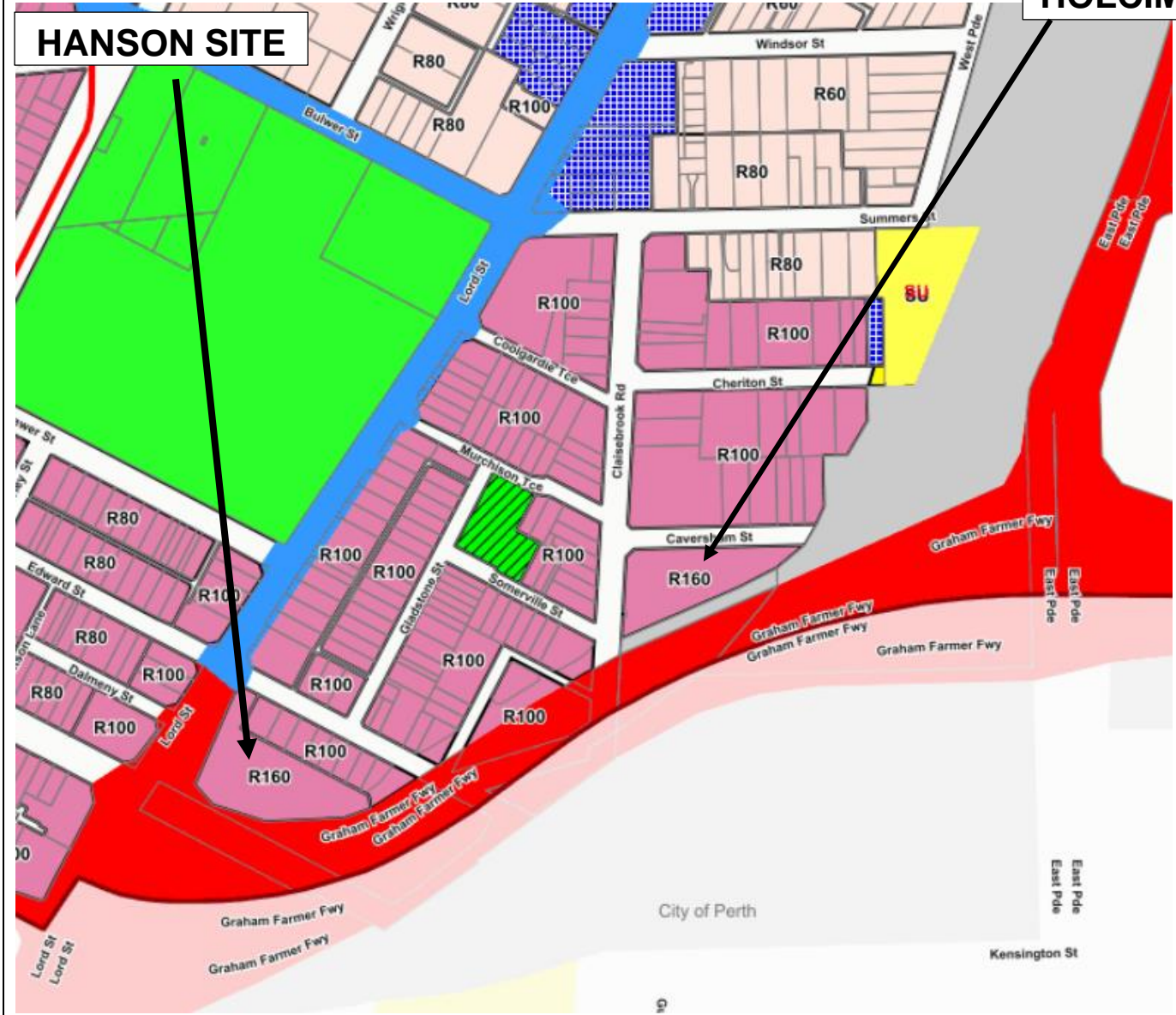
ADDITIONAL USE

ADDITIONAL INFORMATION & RESIDENTIAL PLANNING CODES

- CODE AREA BOUNDARY**
- SCHEME AREA BOUNDARY**
- DENSITY CODE**

HANSON SITE

HOLCIM SITE



CITY OF VINCENT

The City of Vincent does not warrant the accuracy of information in this publication and any person using or relying upon such information does so on the basis that the City of Vincent shall bear no responsibility or liability whatsoever for any errors, faults, defects or omissions in the information. Includes layers based on information provided by and with the permission of the Western Australian Land Information Authority (Landgate) (2013).

Location Map
No. 71 Edward Street (Hanson) and No. 120 Claisebrook Road (Holcim), Perth





HANSON SITE

HOLCIM SITE



CITY OF VINCENT

The City of Vincent does not warrant the accuracy of information in this publication and any person using or relying upon such information does so on the basis that the City of Vincent shall bear no responsibility or liability whatsoever for any errors, faults, defects or omissions in the information. Includes layers based on information provided by and with the permission of the Western Australian Land Information Authority (Landgate) (2013).

**No. 71 Edward Street (Hanson) and
No. 120 Claisebrook Road (Holcim),
Perth**

Extent of City Notification





CITY OF VINCENT

The City of Vincent does not warrant the accuracy of information in this publication and any person using or relying upon such information does so on the basis that the City of Vincent shall bear no responsibility or liability whatsoever for any errors, faults, defects or omissions in the information. Includes layers based on information provided by and with the permission of the Western Australian Land Information Authority (Landgate) (2013).

Locality Context Plan
 No. 71 Edward Street (Hanson) and No. 120 Claisebrook Road (Holcim), Perth

