

Brisbane St Childcare Centre

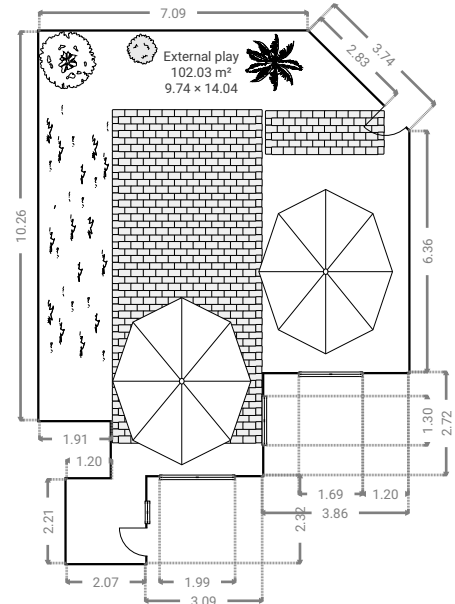
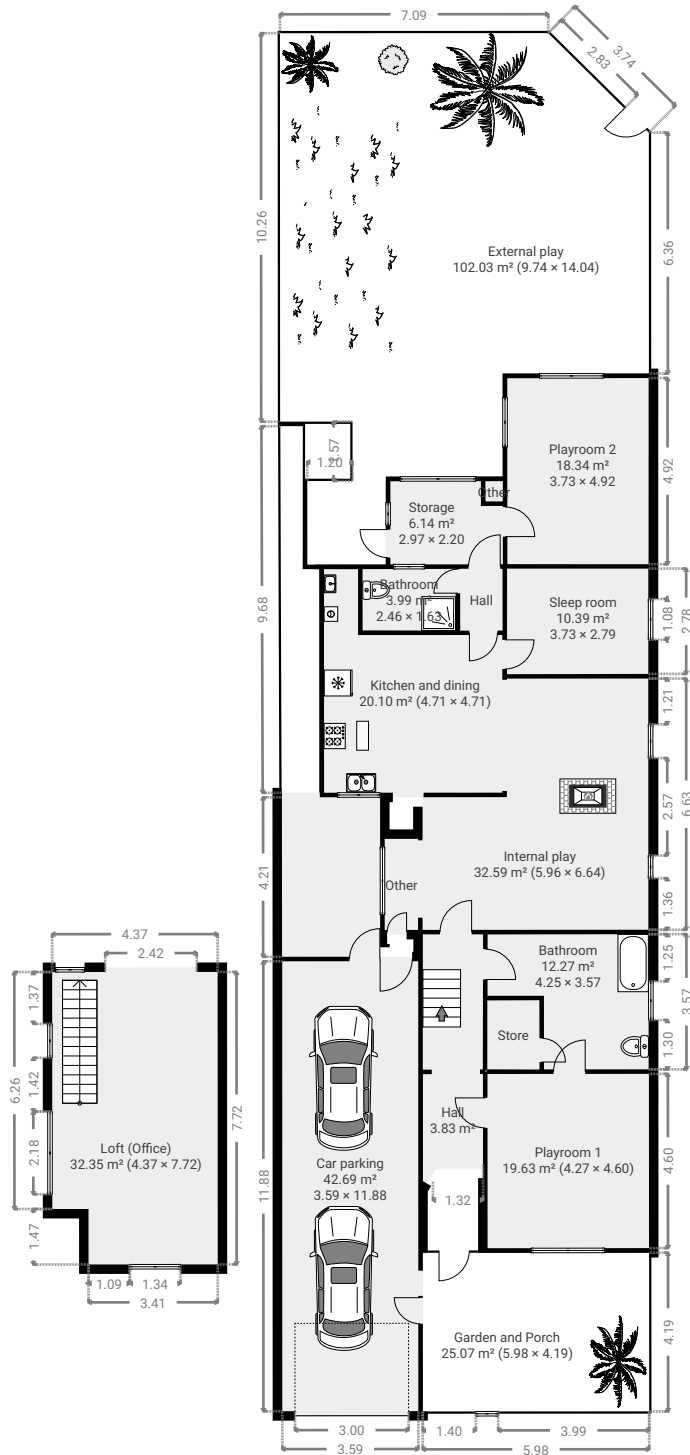
235 Brisbane Street, 6000 Perth, WA, Australia
 TOTAL AREA: 463.76 m² • LIVING AREA: 183.80 m² • FLOORS: 2 • ROOMS: 19



▼ Ground Floor

TOTAL AREA: 463.76 m² • LIVING AREA: 183.80 m² • ROOMS: 19

CITY OF VINCENT
RECEIVED
16 May 2024



THIS FLOORPLAN IS PROVIDED WITHOUT WARRANTY OF ANY KIND. SENSOPIA DISCLAIMS ANY WARRANTY INCLUDING, WITHOUT LIMITATION, SATISFACTORY QUALITY OR ACCURACY OF DIMENSIONS.

