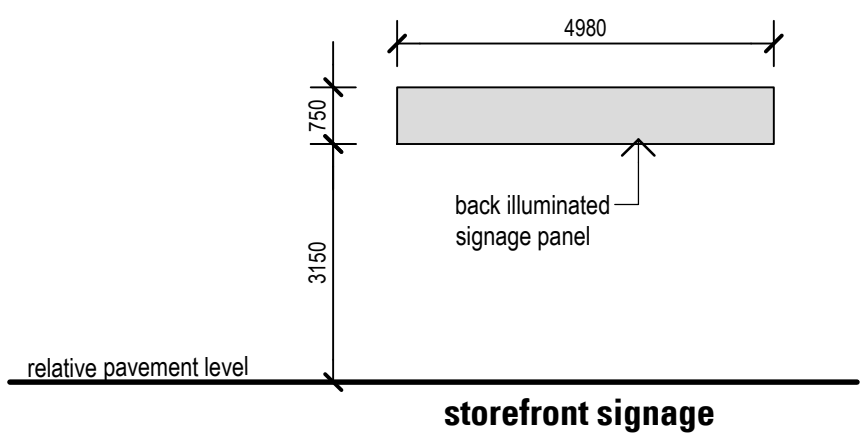
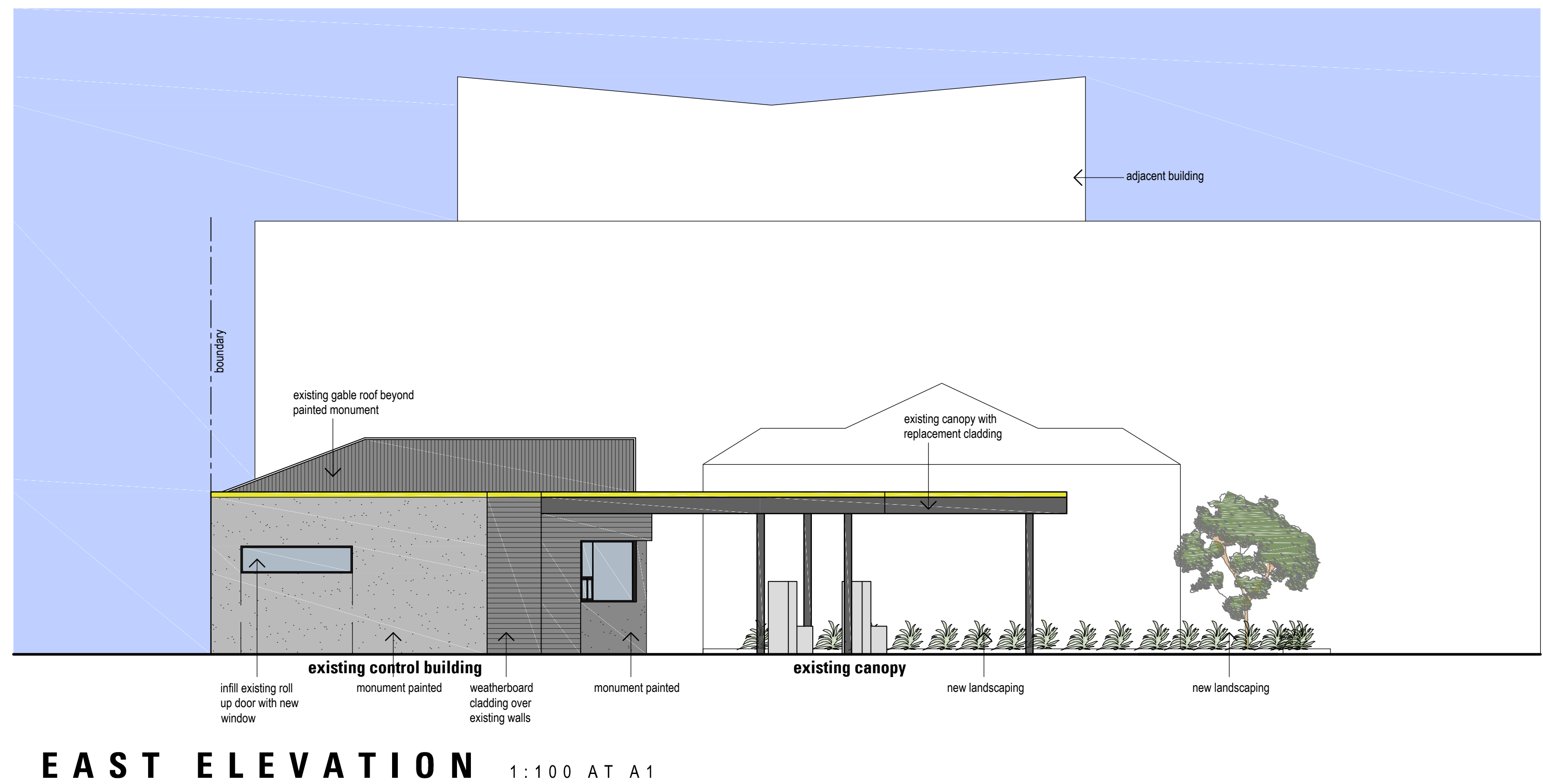


**implemented design elements**

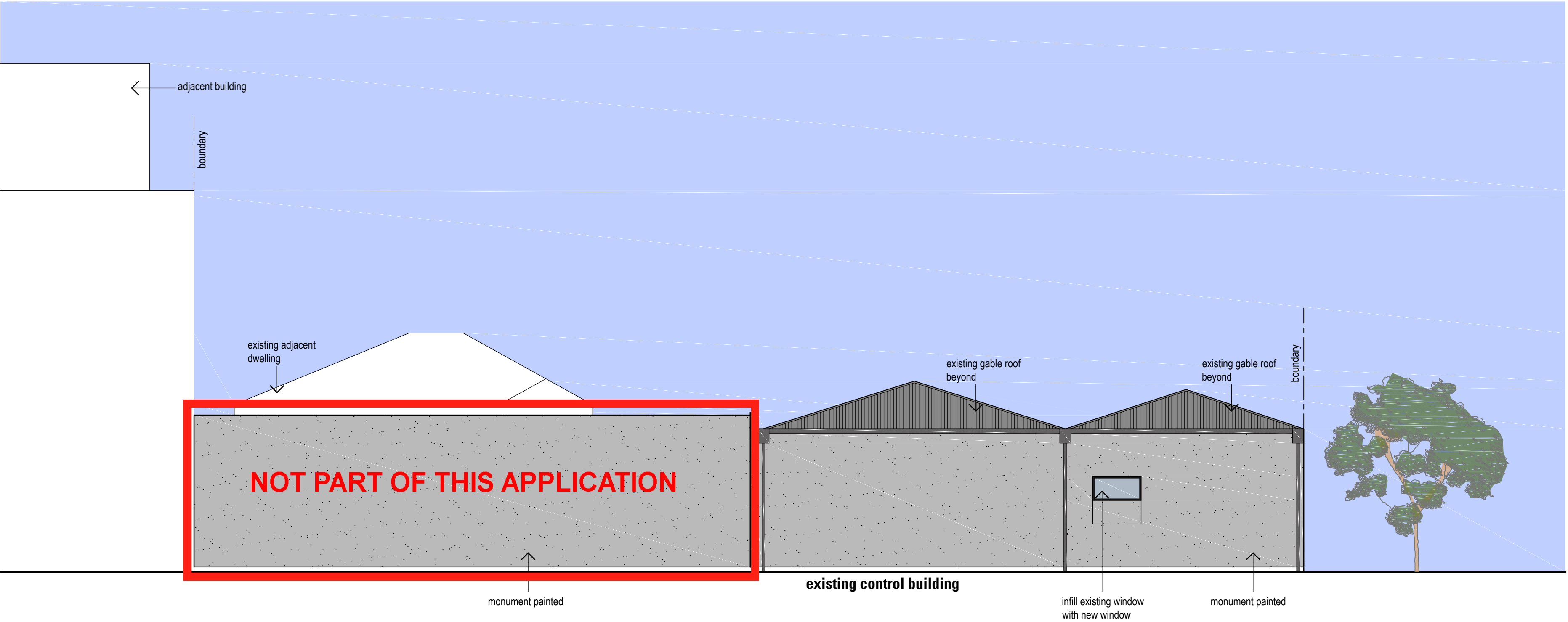
- paint finish colour palette complements adjacent retail and commercial buildings on corner of Angove Street and Woodville Street
- retained gable, existing building heights and existing canopy heights maintaining low-scale built form character of the buildings in the locality
- contemporary design expressed through crisp design elements (weatherboard cladding) and additional glazing, to fit in with other contemporary built form in the locality
- changes to existing building on site improves and enhances use of site to customers and staff
- amenities on site improved current site conditions and will comply with applicable standards
- addition of landscaping on site enhances site and complements the locality including the established trees on Angove Street and Woodville Street



# REFURBISHED SERVICE STATION COMPLEX

41-43 ANGOVE STREET, NORTH PERTH, WA

0 1 2 5 10m  
Scale 1:100 at A1



SOUTH ELEVATION 1:100 AT A1

**implemented design elements**

- paint finish colour palette complements adjacent retail and commercial buildings on corner of Angove Street and Woodville Street
- retained gable, existing building heights and existing canopy heights maintaining low-scale built form character of the buildings in the locality
- contemporary design expressed through crisp design elements (weatherboard cladding) and additional glazing, to fit in with other contemporary built form in the locality
- changes to existing building on site improves and enhances use of site to customers and staff
- amenities on site improved current site conditions and will comply with applicable standards
- addition of landscaping on site enhances site and complements the locality including the established trees on Angove Street and Woodville Street

REFURBISHED SERVICE STATION COMPLEX  
41-43 ANGOVE STREET, NORTH PERTH, WA

