

**CITY OF VINCENT  
LOCAL PLANNING SCHEME NO. 2  
SCHEME MAP 1 - LEEDERVILLE**

**LEGEND**

**METROPOLITAN REGION SCHEME RESERVES**

Note: The Western Australian Planning Commission acts on behalf of the Department of Planning and should be consulted for full information on the actual land requirements for all Metropolitan Region Scheme Reserves.

- PARKS AND RECREATION
- R Restricted Public Access
- PRIMARY REGIONAL ROADS RESERVATION
- OTHER REGIONAL ROADS RESERVATION
- RAILWAYS
- PUBLIC PURPOSES  
Particular use denoted as follows:  
H Hospital  
HS High School  
TS Technical School  
CP Car Park  
U University  
CG Commonwealth Government  
SU Special Use  
WSD Water Authority of Western Australia  
P Prison

**CITY OF VINCENT LOCAL SCHEME RESERVES**

- PUBLIC OPEN SPACE
- R Restricted
- PUBLIC PURPOSES  
Particular use denoted as follows:  
PS Primary School  
CP Car Park  
CU Civic Uses  
HS High School  
I Institute for the Deaf  
W Water Supply Sewerage and Drainage  
TS Technical School

**CITY OF VINCENT SCHEME ZONES**

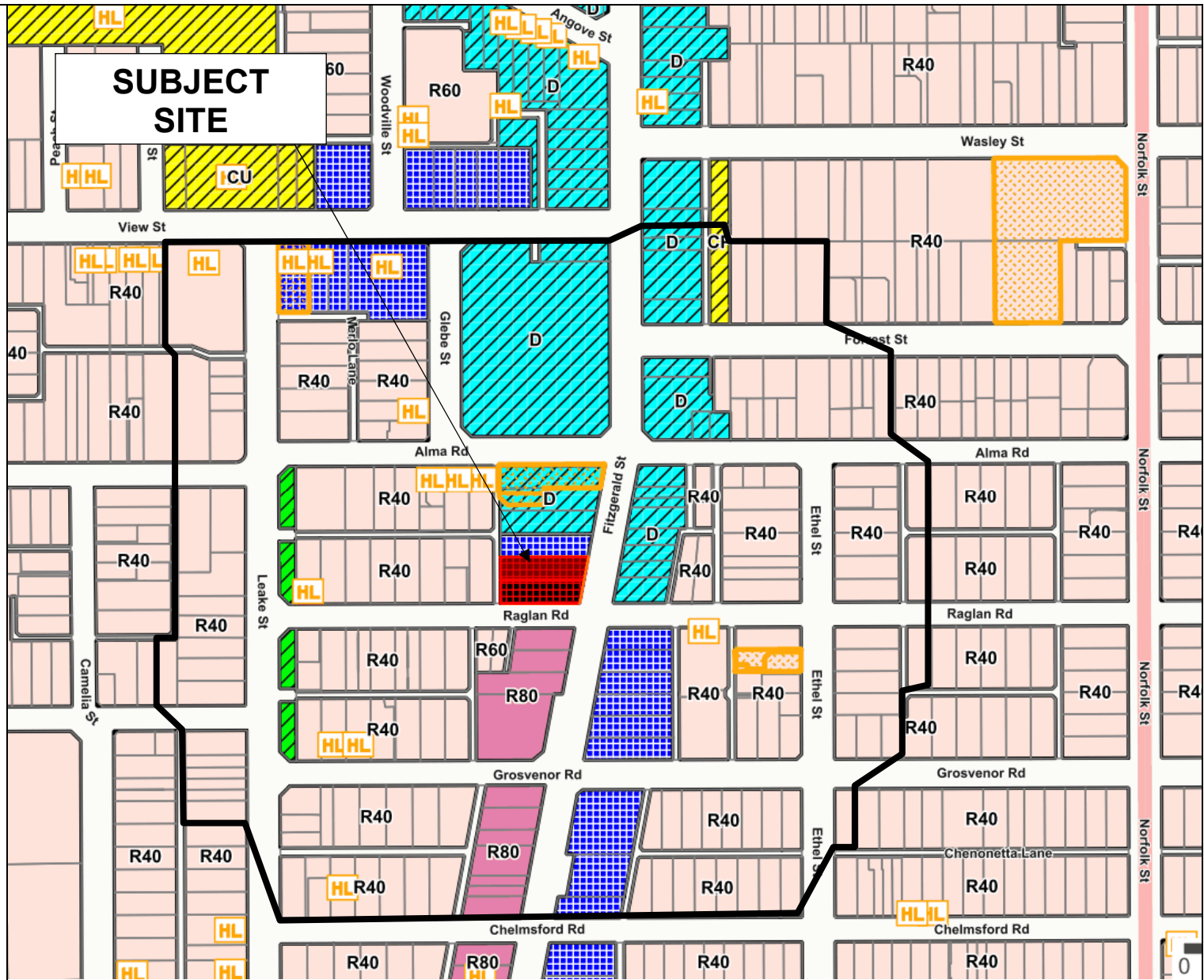
- RESIDENTIAL
- MIXED USE
- COMMERCIAL
- LOCAL CENTRE
- DISTRICT CENTRE
- REGIONAL CENTRE
- SPECIAL USE  
Particular use denoted as follows:  
CP Car Park  
CU Community Use  
FC Function Centre  
HC Hall and Non Residential Club  
H Hotel  
PW Place of Worship  
S Service Station

**ADDITIONAL USE**

ADDITIONAL USE

**ADDITIONAL INFORMATION & RESIDENTIAL PLANNING CODES**

- CODE AREA BOUNDARY
- SCHEME AREA BOUNDARY
- DENSITY CODE



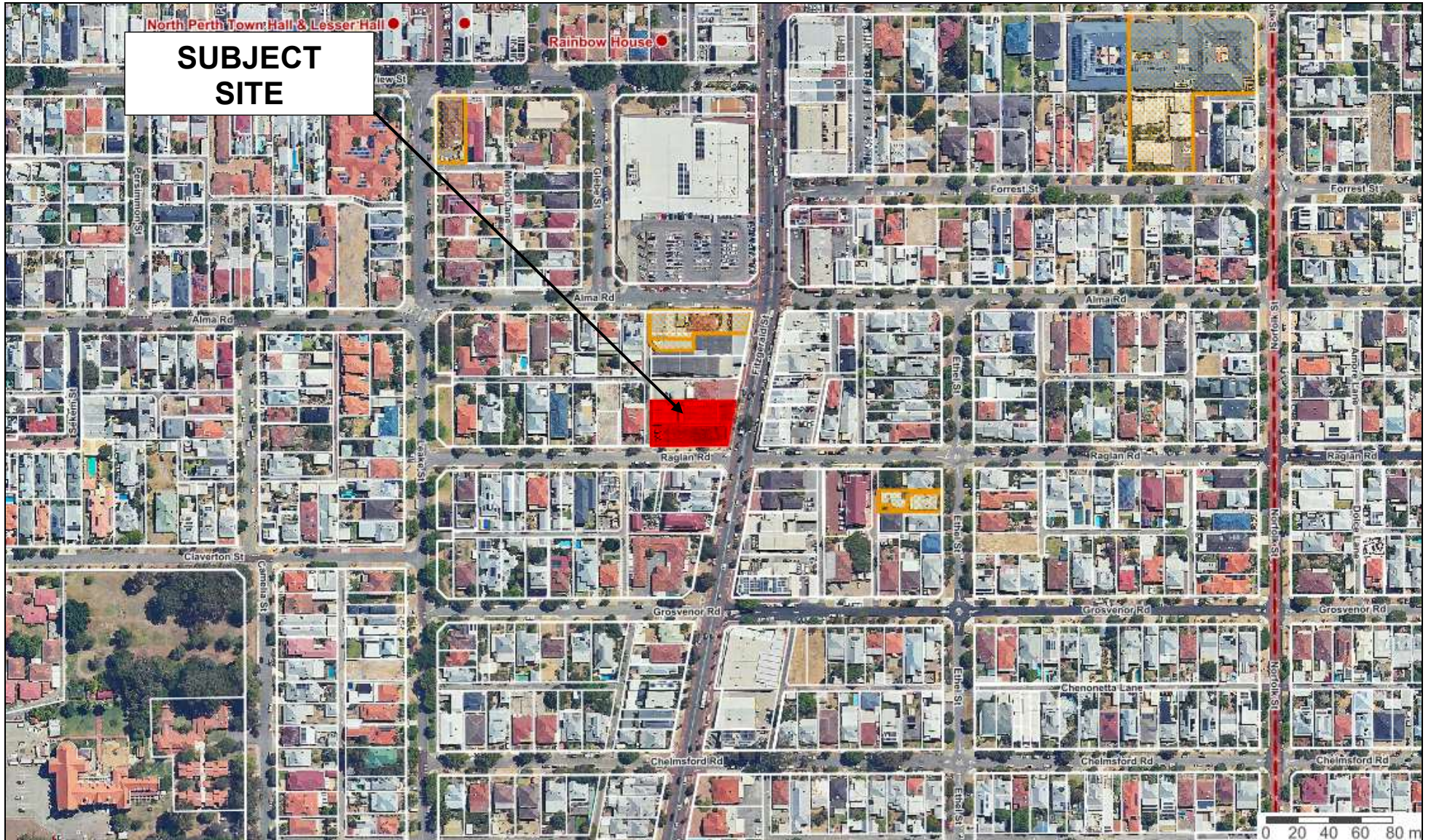
The City of Vincent does not warrant the accuracy of information in this publication and any person using or relying upon such information does so on the basis that the City of Vincent shall bear no responsibility or liability whatsoever for any errors, faults, defects or omissions in the information. Includes layers based on information provided by and with the permission of the Western Australian Land Information Authority (Landgate) (2013).

**Consultation and Location Map**  
Nos. 367 and 369 Fitzgerald Street, North Perth

Extent of Consultation



**CITY OF VINCENT**



CITY OF VINCENT

The City of Vincent does not warrant the accuracy of information in this publication and any person using or relying upon such information does so on the basis that the City of Vincent shall bear no responsibility or liability whatsoever for any errors, faults, defects or omissions in the information. Includes layers based on information provided by and with the permission of the Western Australian Land Information Authority (Landgate) (2013).

Nos. 367 and 369 Fitzgerald Street, North Perth

