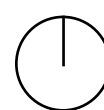
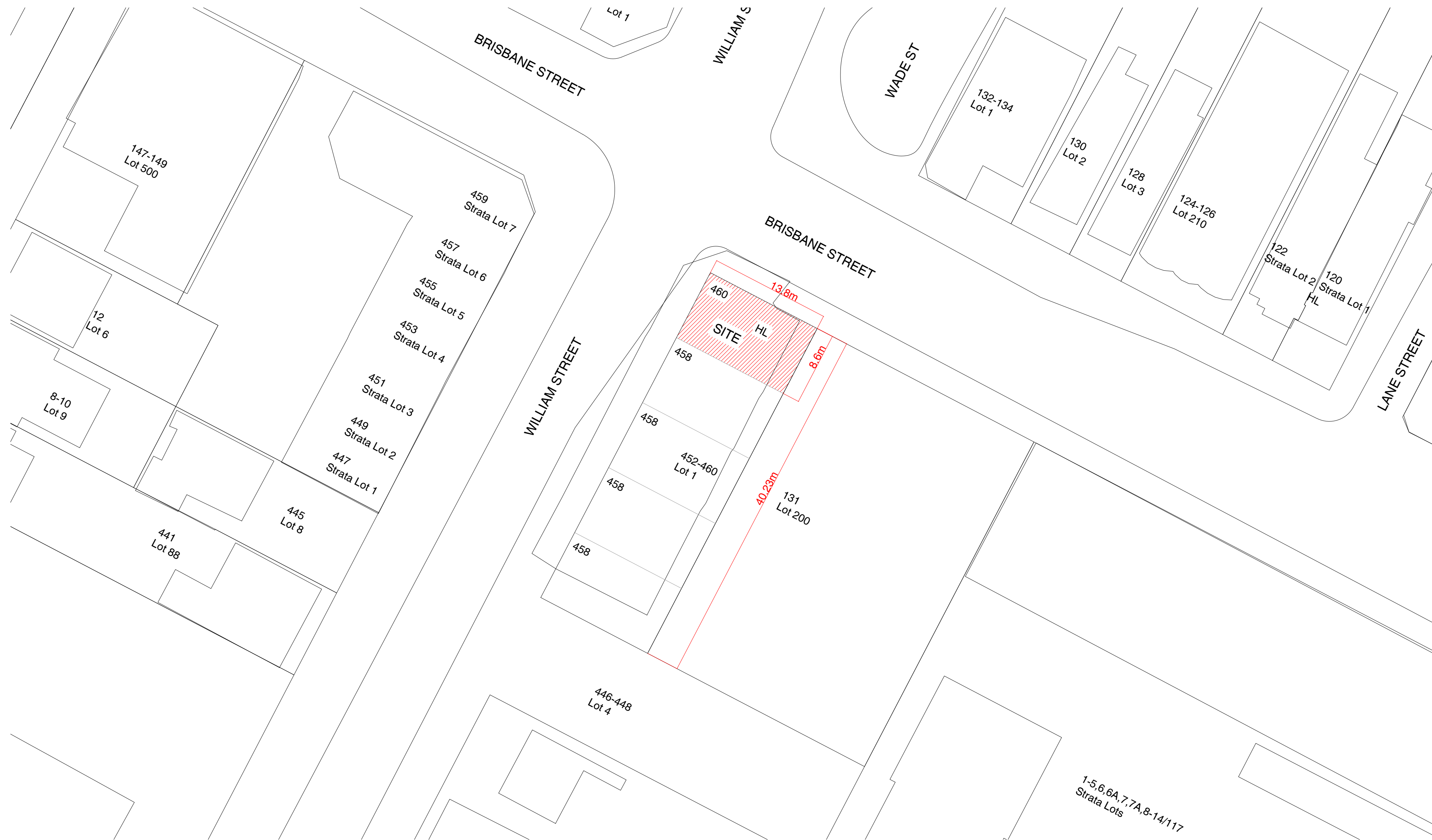
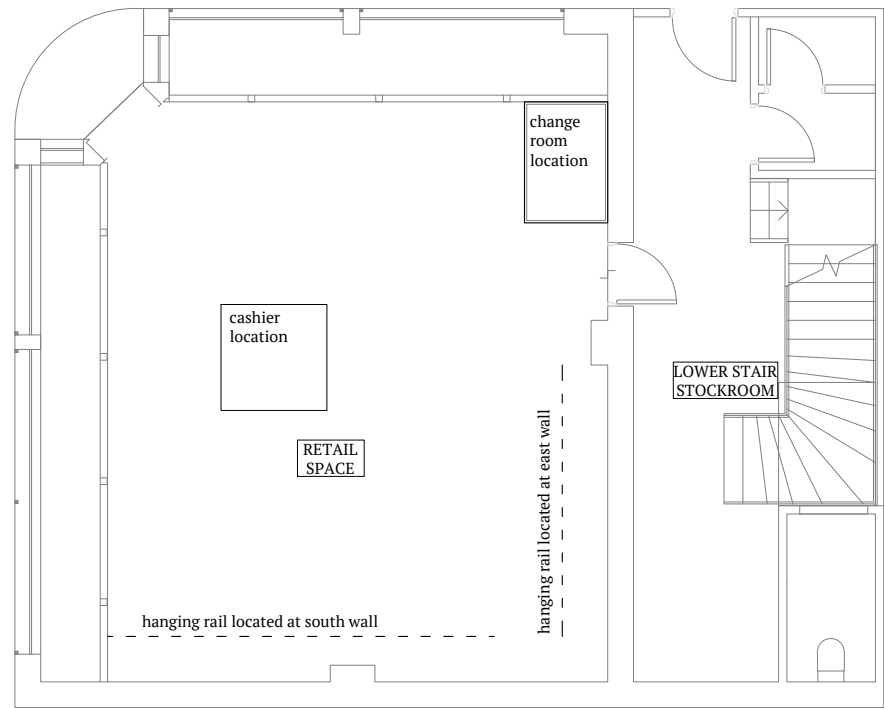


2 Site plan



BRISBANE STREET

WILLIAM STREET

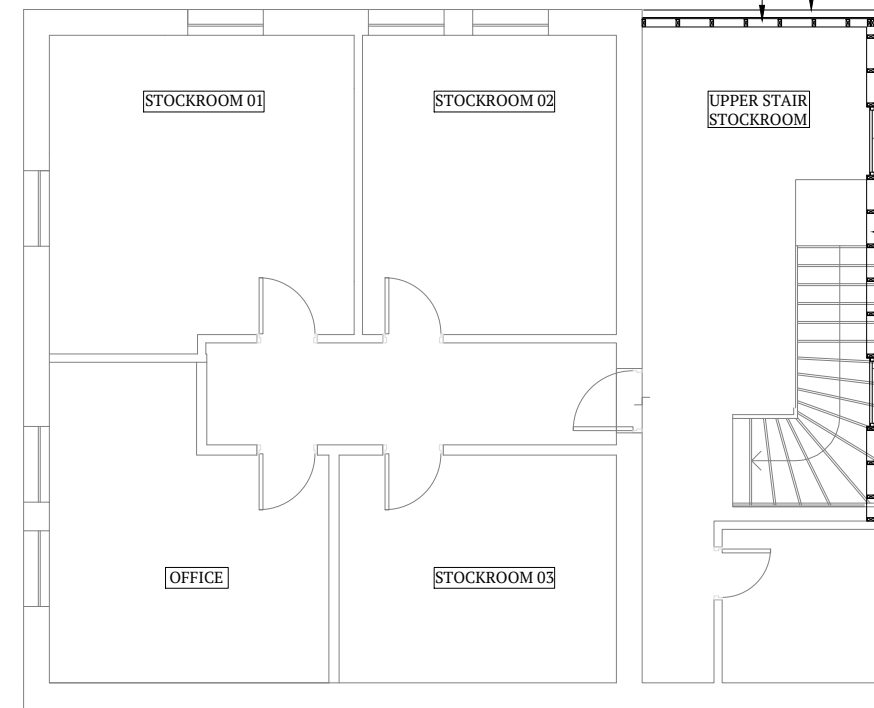


GROUND FLOOR PROPOSED

NEW CFC LINING PAINTED PANATONE B-0908

REAR ELEVATION

BRISBANE STREET



UPPER FLOOR PROPOSED

90X45 H3 MGPI0 STUD LINED WITH HARDIE FLEX

ORIGINAL BALUSTRADE REINSTATED.

ORIGINAL BALUSTRADE REINSTATED.

NEW ALUMINUM WINDOW. SET BEHIND LINE OF ORIGINAL VERANDA STRUCTURE

NEW CFC LINING PAINTED PANATONE B-0908 SET BEHIND LINE OF ORIGINAL VERANDA STRUCTURE

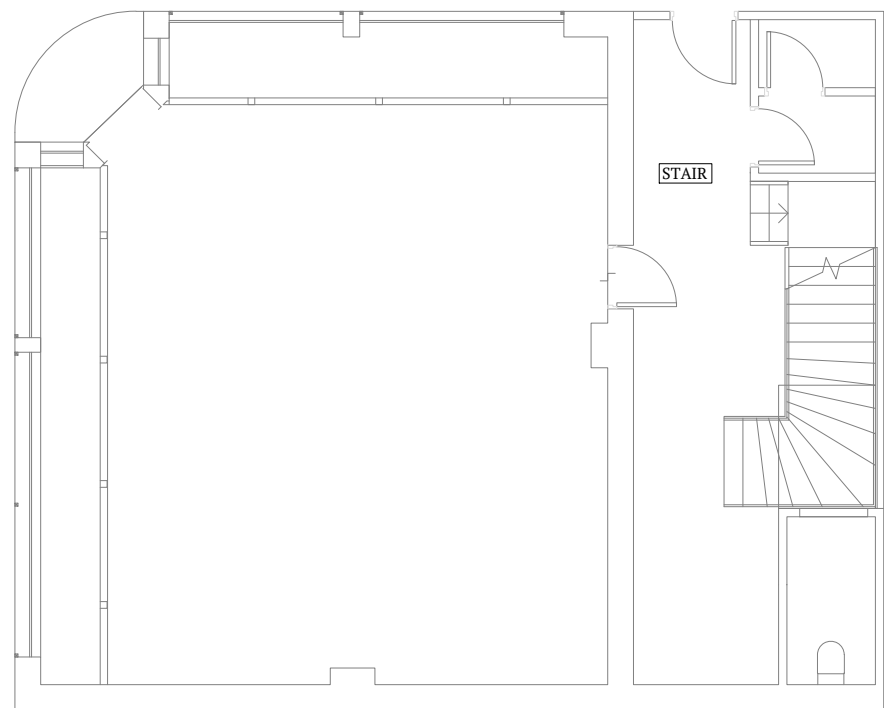
NEW ALUMINUM WINDOW. SET BEHIND LINE OF ORIGINAL VERANDA STRUCTURE

ORIGINAL HANDRAIL RETAINED

REAR ELEVATION

BRISBANE STREET

WILLIAM STREET

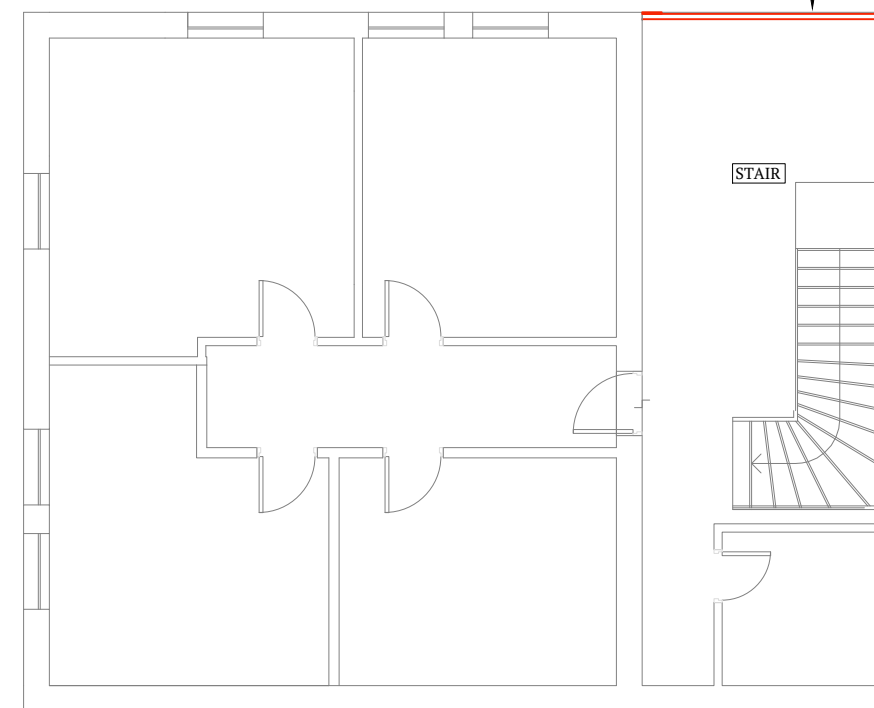


GROUND FLOOR DEMOLITION

REMOVE NON-ORIGINAL METAL LINING

REAR ELEVATION

BRISBANE STREET



UPPER FLOOR DEMOLITION

REMOVE NON-ORIGINAL CFC LINING, HANDRAIL AND BOTTOM RAIL

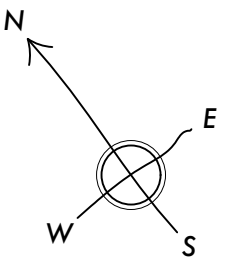
ORIGINAL POST RETAINED

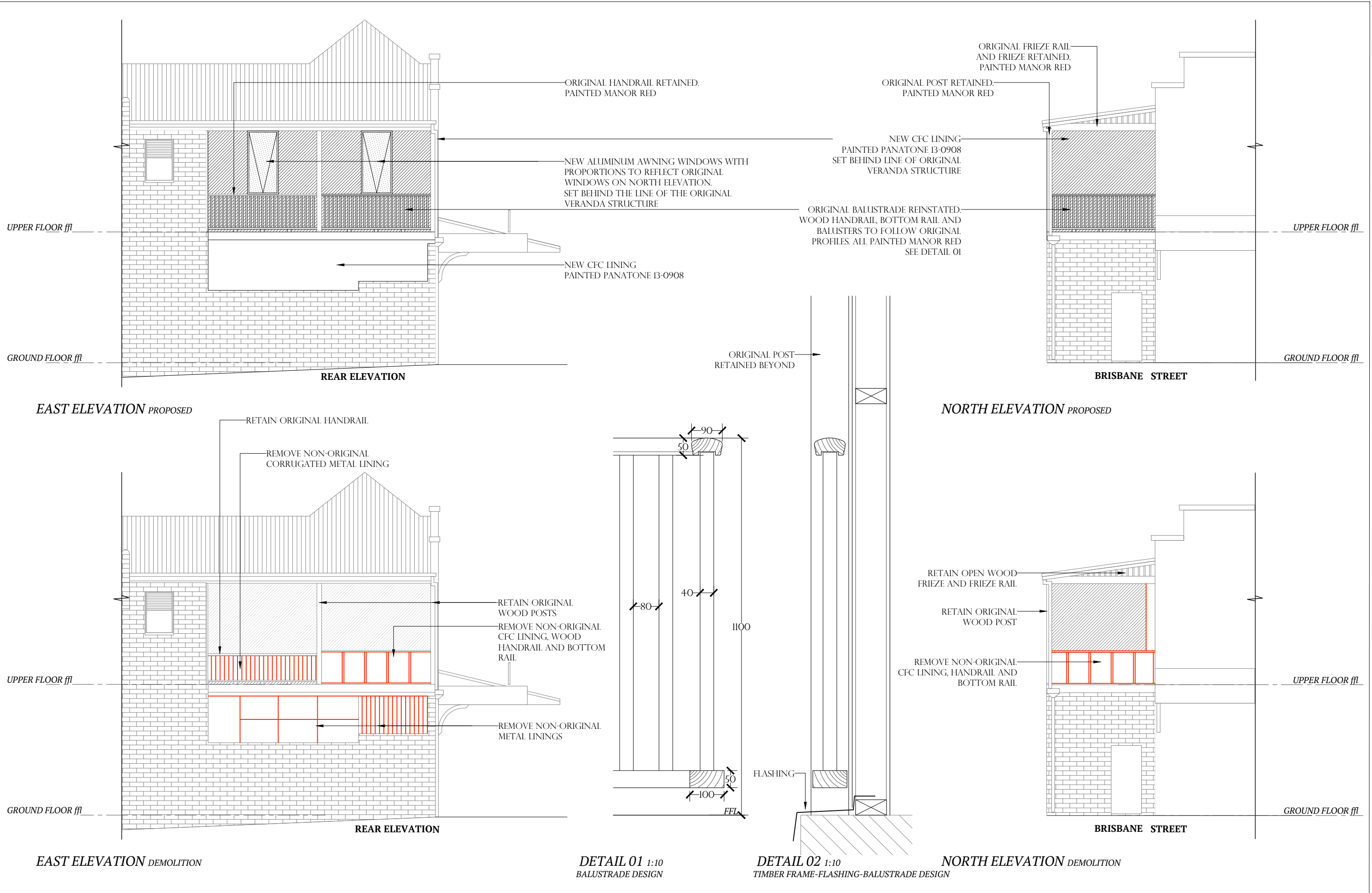
REMOVE NON-ORIGINAL CFC LINING, HANDRAIL AND BOTTOM RAIL

ORIGINAL POST RETAINED

ORIGINAL HANDRAIL RETAINED

REAR ELEVATION







ORIGINAL HANDRAIL RETAINED.
PAINTED MANOR RED

NEW ALUMINUM AWNING WINDOWS WITH
PROPORTIONS TO REFLECT ORIGINAL
WINDOWS ON NORTH ELEVATION.
SET BEHIND THE LINE OF THE ORIGINAL
VERANDA STRUCTURE

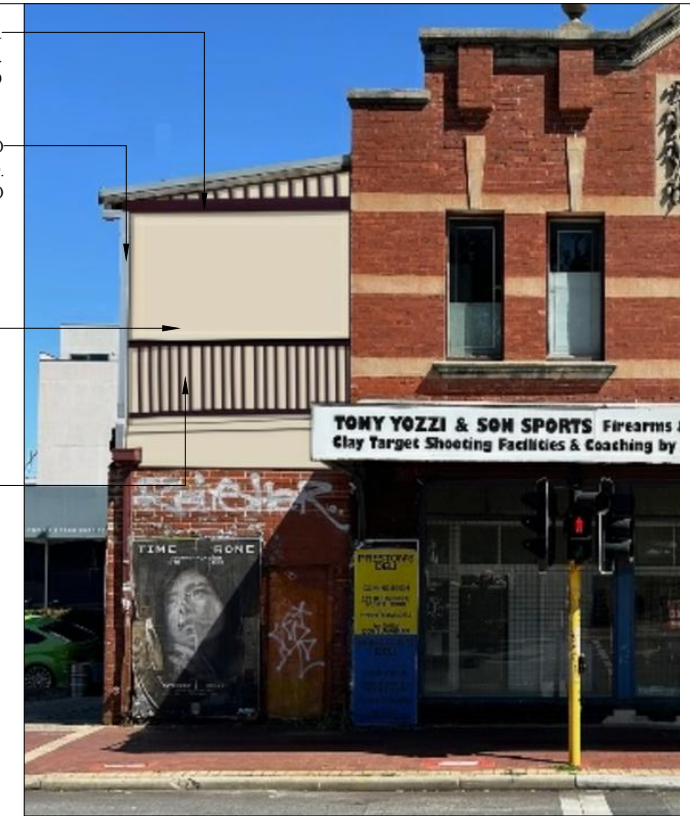
NEW CFC LINING
PAINTED PANATONE I3-0908

ORIGINAL FRIEZE RAIL
AND FRIEZE RETAINED.
PAINTED MANOR RED

ORIGINAL POST (BEHIND
DOWNPIPE) RETAINED.
PAINTED MANOR RED

NEW CFC LINING
PAINTED PANATONE I3-0908
SET BEHIND LINE OF ORIGINAL
VERANDA STRUCTURE

ORIGINAL BALUSTRADE REINSTATED.
WOOD HANDRAIL, BOTTOM RAIL AND
BALUSTERS TO FOLLOW ORIGINAL
PROFILES. ALL PAINTED MANOR RED
SEE DETAIL 01



BRISBANE STREET

EAST PERSPECTIVE PROPOSED

RETAIN ORIGINAL HANDRAIL

REMOVE NON-ORIGINAL
CORRUGATED METAL LINING



RETAIN ORIGINAL
WOOD POSTS
REMOVE NON-ORIGINAL
CFC LINING, WOOD
HANDRAIL AND BOTTOM
RAIL

REMOVE NON-ORIGINAL
METAL LININGS

REAR ELEVATION

EAST PERSPECTIVE DEMOLITION

NORTH PERSPECTIVE PROPOSED

RETAIN OPEN WOOD
FRIEZE AND FRIEZE RAIL

RETAIN ORIGINAL
WOOD POST

REMOVE NON-ORIGINAL
CFC LINING, HANDRAIL AND
BOTTOM RAIL



BRISBANE STREET

NORTH ELEVATION DEMOLITION